

EZ-COMPASS-3A

APPLICATION MANUAL

Includes versions 3AV & 3AH

Limited Warranty:

The seller warrants that its product will be free of defect in material and workmanship for a period of ninety (90) days from date of shipment thereof. Within the warranty period the seller will, at its option, either repair or replace such product which is determined by the seller to be defective and which is returned with shipping charges prepaid. This warranty will not apply to any product which has been subjected to misuse, negligence or accident; or misapplied; or modified or repaired by unauthorized persons; or improperly installed; or altered in any way. This warranty is not applicable to resale products.

THIS LIMITED WARRANTY IS IN LIEU OF AND EXCLUDES ALL OTHER WARRANTIES OR IMPLIED, INCLUDING THE WARRANTY OF MERCHANTABILITY OF FITNESS FOR PARTICULAR PURPOSE.

ADVANCED ORIENTATION SYSTEMS, Inc.

1901 E. Linden Ave, Unit 22, Linden, NJ 07036

Tel: 908-474-9595 Fax: 908-474-9090

e-mail: sales@aositilt.com site: www.aositilt.com

EZ-COMPASS-3A

**Tilt / Temperature Compensated
Compass Magnetometer**

WARNING: EZ-COMPASS-3A is equipped with an active code protection routine. Any unauthorized attempt to read, print or corrupt the EZ-COMPASS-3A internal software will immediately result in its total and unrecoverable removal, and will void the warranty.

This Application Manual presents the basic compass specifications, information on how to use the EZ-COMPASS-3A and its communication commands.

EZ-COMPASS-3A is a solid state low cost advanced pitch/roll compensated COMPASS / MAGNETOMETER system which is built around a state of the art CMOS microcontroller utilizing AOSI's proprietary algorithm and is available in four versions (General purpose, Geophysical Vertical, Geophysical Horizontal and DIVE). Tuned IIR filter filters gray noise and permits faster data transfer to the serial port. All versions output continuous heading, field, dual axis tilt and temperature data over the standard RS-232, RS-485 or RS-422 interfaces. The AZIMUTH is generated from a 3 axis semiconductor magnetometer with 12 bit (0.08 deg) resolution. The LINEAR tilt information is available with 12 bit resolution for up to +90arcdeg. The COMPASS-3A is able to output heading information in NMEA-0183 mode. Easy link via the Hyper Terminal Windows accessory facilitates custom calibration, hard iron compensation, data acquisition, data averaging and data display. Demo software is provided gratis.

COMPASS/TILT module is perfectly suitable for measurement and control in numerous navigation, drilling, research, training, construction, entertainment and other precision orientation and leveling applications. It is considered a logical replacement for FLUX GATE compasses.

Common notations: All EZ-COMPASS-3A commands are NOT case sensitive. All commands must end with a <CR>.

EZ-COMPASS-3A can operate in four distinct modes:

1. Main mode or TTCM (Tilt/Temperature/Compass/Magnetics mode)
2. NMEA-0183 multi output mode
3. DEBUG / CALIBRATION mode (password protected)
4. Remote serial LCD mode (installed on special orders)

COMPASS SPECIFICATIONS

AZIMUTH RANGE	---	0 -- 360	deg, continuous
PITCH RANGE	---	-90 to +90	arcdeg, continuous *
ROLL RANGE	---	-90 to +90	arcdeg, continuous *
AZIMUTH RESOLUTION	---	12 (0.08)	bits (degrees)
TILT RESOLUTION	---	12	bits, full scale, both axis
AZIMUTH ACCURACY	---	<0.5	deg, typical horizontally (with soft iron cal)
TILT REPEATABILITY	---	<0.05	arcdeg, typical
MAGNETIC FIELD	---	+2	Gauss, maximum
MAGNETIC RESOLUTION	---	<1	mGauss
SUPPLY PIN 3	---	7-15Vdc	power regulated
CURRENT DRAW "ON"	---	45mA	during operation
TEMPERATURE	---	-40 ⁰ to +85 ⁰	degC, operational
TEMPERATURE	---	-55 ⁰ to +125 ⁰	degC, storage
WEIGHT	---	<12	grams
CALIBRATION	---	EEPROM	non-volatile
COMMUNICATION	---	1200 -- 38400	baud (8 bit, No parity, 1 stop, No flow)
OUTPUT FORMATS	---	serial	RS232, NMEA-0183, RS422, RS485
UPDATE RATE	---	10	times/sec valid data
UPDATE MODES	---	2	continuous and on-demand
UPDATE TYPES	---	programmable scan delay, filter and dumping factor	
NMEA-0183 mode	---	5 sentences	continuous and on-demand

* linear correction calibration is available

NOTE: *The distortion in all the three magnetic axis without change in tilt suggests the presence of ferromagnetic material and should be carefully corrected with accustom software filter.*

IT IS RECOMMENDED TO TEST THE PERFORMANCE OF THE COMPASS UPON RECEIPT WITHOUT ANY ADDITIONAL HARD OR SOFT IRON COMPENSATION. IF THE RESPONSE OF THE COMPASS IS NOT LINEAR, HARD IRON COMPENSATION IS RECOMMENDED. IF THE NEW PERFORMANCE IS STILL NOT SATISFACTORY, THEN THE LOCAL SOFT IRON COMPENSATION SHOULD BE PERFORMED. GENERALLY THE COMPASS WILL OPERATE WITHOUT ANY ADDITIONAL COMPENSATION.

With questions or comments on the operation of this or any other AOSI product please contact AOSI at:

Tel: 908-474-9595

Fax: 908-474-9090

e-mail: sales@aositilt.com

Web site: www.aositilt.com

COMMANDS:**NOT case sensitive and must end with <CR>.**

<u>COMMAND</u>	<u>ARGUMENT</u>	<u>DESCRIPTION</u>
help	<CR>	prints all user commands
ver	<CR>	prints version number on the screen
reboot	<CR>	Restart
ax	<CR>	Restart
baudrate	[1200 – 38400]	set baudrate [19200 default]
go	<CR>	sets temporary continuous mode
auto	[on/off]	Continuous output ON / OFF
cont	[e/d]	Continuous output enable/disable
lcd	[on/off]	Continuous LCD ON/OFF (restricted)
nmea	[a/b/c/d/e]	Set NMEA [x] ON for continuous mode
nmea	[off]	cancel NMEA mode
hardiron	[cal/on/off]	calibrate/activate hard iron calibration
softiron	[a/b/on/off]	select/calibrate/activate soft iron calibration
lincal	[r/p/on/off]	calibrate/select/activate linear correction
zero	[r/p/c] [off]	set/select/activate ZERO orientations
print	rptxyzcad	Select variables for display
refresh	0.1 to 600sec	Select display refresh rate
filter	[1 to 40]	Select filtering coefficient, default 10
dev	[+-value]	Set deviation value in degrees
var	[+-value]	Set variation value in degrees
dev	<CR>	show deviation (deg), PC mode only
var	<CR>	show variation (deg), PC mode only
debug	[on/off]	enter debug mode (restricted)
s?	Single scan update	selected values, PC mode only
c?	Show Compass	direction (deg), PC mode only
m?	Show Magnetometer	mag. Field (mG), PC mode only
r?	Show Roll	roll angle (arcdeg), PC mode only
p?	Show Pitch	pitch angle (arcdeg), PC mode only
d?	Show Drill	hole direction & tilt, PC mode only
banner1	[20chr]	set first line for LCD option only
banner2	[20chr]	set second line for LCD option only
t?	Show Temperature	temperature (deg C), PC mode only
\$TNHCQ,	NMEA QUERY	see 5 nmea query sentences

Definitions:

MAGNETIC heading is a heading value that is already corrected for hard /soft iron.

TRUE heading is a heading obtained by adding var value to the calculated Magnetic heading.

- **The deviation is a difference between the actual raw magnetic direction and the direction calculated after hard iron/soft iron compensation. In case dev is inputted , it will be added to the measured magnetic heading for display. Upon each powerup dev is reset to ZERO.**
- **Variation is inputted at any time by the external instrument var=xx.xx. Upon powerup variation is reset to ZERO.**

NMEA MODE:

All heading readings in mode a, c, d and e are magnetic

Heading True: In the heading field, the variation is null if variation has not been programmed. If deviation has not been programmed, it is assumed to be zero, otherwise it is added to measured magnetic heading and variation to express true heading.

Five NMEA query commands:

\$TNHCQ,HDM*58<CR><LF>	The answer is line “a” below
\$TNHCQ,HDT*34<CR><LF>	The answer is line “b” below
\$TNHCQ,HDG*27<CR><LF>	The answer is line “c” below.
\$TNHCQ,HPR*78<CR><LF>	The answer is line “d” below.
\$TNHCQ,XDR*22<CR><LF>	The answer is line “e” below.

Output formats:

a. Magnetic heading: \$HCHDM,<compass>,M*checksum<CR><LF>

<compass> is calculated value after hard/soft iron or dev and zero command

=====
b. Heading True: \$HCHDT,<xxx.x>,T,*shecksum<CR><LF>

<compass> is calculated value after hard/soft iron or dev, +var and zero command

c. Head,dev,var:

\$HCHDG<compass>,<deviation>,q,<variation>,j,*checksum<CR><LF>

<compass> is calculated value after hard/soft iron or dev and zero command

q is E if <deviation> is positive, W if <deviation> is negative

j is E if <variation> is positive, W if <variation> is negative

d. Head,Pitch,Roll: \$HCHPR,<heading>,<pitch>,<roll>,*checksum<CR><LF>

<compass> is calculated value after hard/soft iron or dev and zero command

<pitch> is pitch angle, <roll> is roll angle

e. Temp,Pitch,Roll:

\$HCXDR,A,<pitch>,D,PITCH,A,<roll>,D,ROLL,C,<temp>,C,*checksum<CR><LF>

<temp> is temperature in degC, <pitch> is pitch angle, <roll> is roll angle

WIRING

	<u>RS232</u>	<u>RS422</u>	<u>DIVE</u>	<u>422--232</u> Turk cable
PINS	JP2	JP3	DIVE	GREEN connector
PIN 1 →	TX out	TX+	4 red	pin1 TX+ blue
PIN 2 →	RX in	TX-	5 orng	pin2 TX- brown
PIN 3 →	7-15Vdc	RX+	3 grn	pin3 RX+ grey
PIN 4 →	GND	GND	1 wht	pin4 GND black
PIN 5 →	N/C	RX-	2 blk	pin5 RX- white
PIN 6 →	N/C	+9-15Vdc	6 blu	pin7 +12Vdc red

RS232 PIN CONNECTIONS:

BOARD:	25D CONNECTOR	9 PIN/LCD	LCD power 4 pin
PIN 1	PIN 3	PIN 2/3	
PIN 2	PIN 2	PIN 3/2	
PIN 3	Vin pin (7--12Vdc)		7--12 Vdc
PIN 4	PIN 7, BATTERY GND	PIN 5,BATTERY GND	common GND pin
PIN 6			

- A. PLEASE NOTE THAT PIN 3 ON A 25D CONNECTOR IS PIN 2 ON 9D PIN CONNECTOR.
- B. PLEASE NOTE THAT PIN 2 ON A 25D CONNECTOR IS PIN 3 ON 9D PIN CONNECTOR.
- C. PLEASE NOTE THAT PIN 7 ON A 25D CONNECTOR IS PIN 5 ON 9D PIN CONNECTOR.

For special orders / enclosure wiring please refer to GENERAL NOTES section at the end of this manual.

GENERAL COMMUNICATION NOTES

Before running the compass for the first time with your PC you are required to:

1. Select the Hyper Terminal mode from the Accessories menu
2. Create a link and an icon named “ compass3 “
3. Set the communication for com1 or com2
4. Configure for 19200 baud, 8 bits, No parity, 1 stop bit, No flow control.
5. Plug in the cable into the DSUB connector on your computer.
6. Plug in the power source or battery.
7. Plug in the connector into the compass

After the identification is displayed, the compass is ready for local calibration.

HARD IRON CALIBRATION THEORY:

The EZ-COMPASS-3A includes active Hard Iron compensation, which removes the influence of constant magnetic anomalies located in the proximity of the compass. It is not possible to compensate for variable magnetic sources, however it is possible to detect them and suspend or try and correct readings during these variable anomalies.

During the installation of the compass the operator should continuously check the x,y and z magnetic fields while the magnetic anomaly is on. The compass should be placed as far as possible from the source of that anomaly and upon final installation the reading of x, y and z should be recorded when the anomaly is on and off. Please note that this should be done while the tilt outputs are ZERO on both axis.

In case of installation of the compass *in or near* a strong metal object it is recommended to rotate the complete structure horizontally 360 CW or CCW for about 1-2 minutes while the compass records magnetic data during the <hardiron> mode.

After completing the calibration the compass will compensate for the metal mass of the structure.

HARD IRON CALIBRATION

To calibrate for HARD IRON you are required to place the compass FLAT on the surface and type “hardiron cal” <CR>. The computer will instruct you to slowly rotate the compass board one full revolution while it collects the surrounding magnetic field. Keep the unit as horizontal as possible while rotating. The computer will display four lists of data. Continue rotating until no more new points are printed. Upon completion of the rotation press any key to stop calibration. The computer will display 4 correction coefficients. To activate the hard iron calibration please type: ***hardiron on***<CR>

Soft Iron pre-Calibration Note

For best results this procedure should be used in conjunction with the “compass calibration fixture” which is provided with your compass. Please carefully read the section of the manual describing the Soft Iron Calibration in order to understand the its basic principle.

1. Position the calibration fixture on a flat surface. Confirm that the location does not have any metal frame or tubing/piping under the surface.
2. Position the four pedestals on the four designated markers.
3. Rotate the inner disk until the arrow points to N or (0 degrees).
4. Place the compass aligned with the four markers on the top circle. Confirm that the word “FORWARD” on the compass board is in the same direction as NORTH on the calibration fixture.
5. Plug in the compass into Hyper Terminal and power it up.

During SOFT IRON calibrations the compass should be keep FLAT on the surface

STANDARD DYNAMIC SOFT IRON CALIBRATION

EZ-COMPASS-3A includes special **soft iron a** compensation. To calibrate for SOFT IRON place the compass FLAT on the surface and type “softiron a” <CR>. This compensation will remove the residual influence of multi-pole magnetic field interference and most linearity errors. In response to the above command, the computer will ask to select the number of correction intervals (10 to 72) and after <CR> will instruct to orient the compass board to point to Zero (or any other direction that is required to be ZERO). Pressing <CR> will store the raw compass value and automatically instruct the user to advance to the next angular orientation. This sequence will continue until the full revolution is completed. Upon completion of the full rotation the “**softiron a**” calibration will automatically end and the correction formula stored. To activate this calibration the user should type **softiron on**<CR>

NON RESTRICTIVE SOFT IRON CALIBRATION.

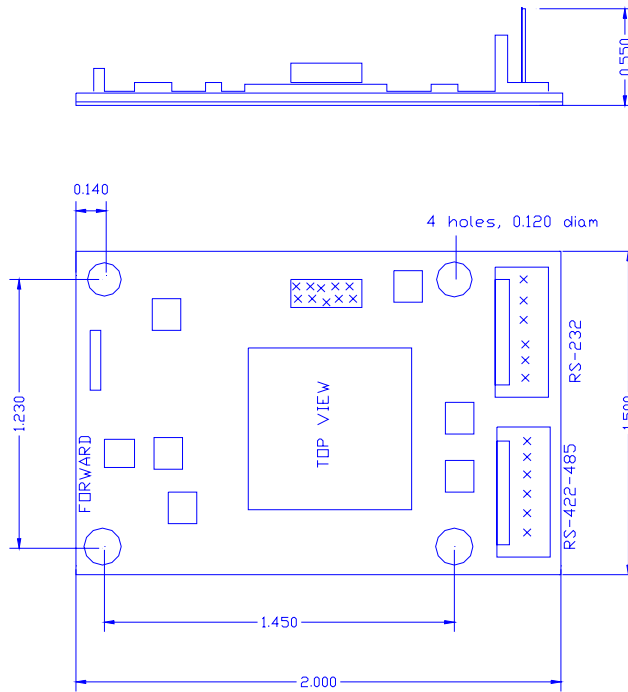
EZ-COMPASS-3A includes special NON segment restrictive **soft iron b** calibration. This calibration permits users to select any segment size in any section of the output curve and correct the output for linear errors. In this calibration the user is directed to put the compass in any known orientation and then input that location. The compass will use this data to create a new curve based on operators input. This calibration is useful in application where the user is unable to rotate the structure the complete 360 degrees, or needs to correct for linearity in a specific segment of the output curve.

To start the calibration type **softiron b**<CR>. The unit will ask for actual position of the compass at all new locations, input the required value. It is recommended to start from North and verify that the first uncompensated reply to the **c?**<CR> command is a bit larger then ZERO. Repeat until done within the limit of available room for storage. The routine will sort all points to be in proper ascending order and save data. If you want to stop and save - hit ENTER without entering any numbers. Hit ESC if you want to abort calibration and discard all the data. To activate this calibration the user should type **softiron on**<CR>

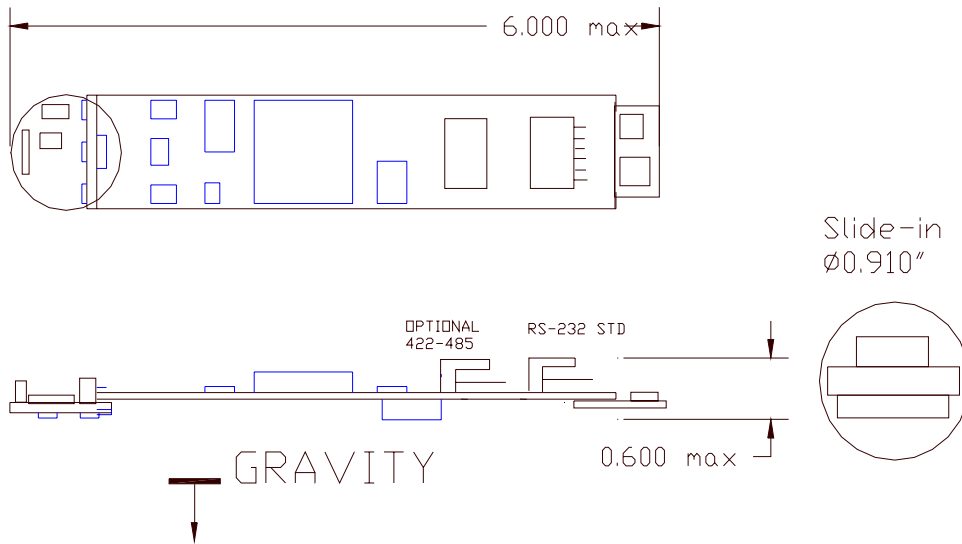
Type **softiron off**<CR> to disable calibration.

EXTERIOR VIEW DRAWINGS:

General purpose version: **EZ-COMPASS-3A**

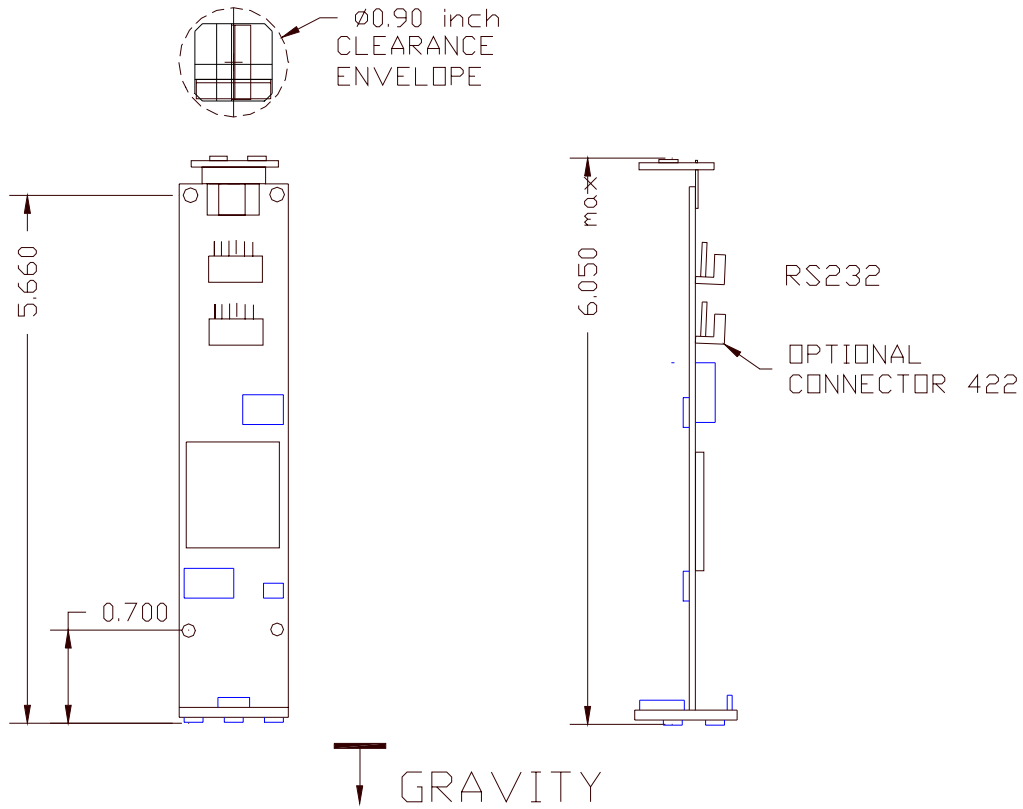


Geophysical Horizontal version: **EZ-COMPASS-3AH**



Geophysical Vertical version:

EZ-COMPASS-3AV

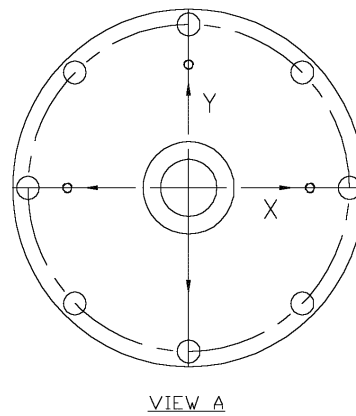
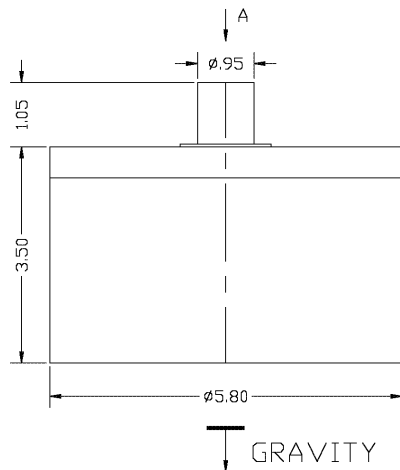


High reliability submersible version:

EZ-COMPASS-3A-DIVE

6 pin connector

Forward direction



EZ-COMPASS-3-DIVE is provided with a mating connector and minimum 18" long cable. The unit includes eight ¼ - 20 SHCS mounting holes on the bottom exterior flat surface, equally spaced at 45 arcdeg on a running diameter of 5.300".

RS-232 and RS-422 Wiring for the pig-tale cable:

RS-232

Pin1= +9 to +15Vdc

Pin2 = N/C

Pin3 = Tx+

Pin4 = Rx-

Pin5 = N/C

Pin6 = 0V and to RS232 common GND

RS-422

+9 to +15Vdc

Tx-

Tx+

Rx-

Rx+

GND & 0Vdc supply

Below is the view into the inside of the mating connector on the cable.

Two bumps on the outside of the cable connector are the marking for the "WHITE" wire alignment (mates to the thick pin → pin1 on the compass connector).

Pin1
white

orange-pin5 blue-pin6 black-pin2

red-pin4 green-pin3

General notes:

To zero either pitch or roll axis position the compass in its final vertical orientation, perform **r?<CR>** or **p?<CR>** for position verification, than type **zero p<CR>** or **zero r<CR>**. The compass will offset either one or both tilt axis and record these values in the internal memory. To remove any tilt offsets using **zero p off** and **zero r off** commands.

In TTCM (tilt/temp/comp/magnet) mode various values are set or removed from the output string by using the **print** command. Following is the ASCII string that is printed by the Hyper-terminal as a reply to **s?** or **go** commands when all variables are enabled.

\$R-2.61P1.08T21.5X206.7Y95.4Z-367.5C43.9D32.4A41.6*4d

\$	is a start character	P	pitch(arcdeg)	T	temperature (degC)
*	is an end character	R	roll (arcdeg)	X,Y,Z	magnetic fields (mGauss)
4d	is checksum characters	C	azimuth (deg)	D,A	DRILL values

TURCK cable		PROBE RS-232	PROBE RS-422
RED	--	9-15 Vdc power	9-15 Vdc power
BLACK	--	GND common	GND common
BLUE	--	TX	TX+
WHITE	--	RX	RX-
GREY	--	N/C	RX+
BROWN	--	N/C	TX-

STANDARD "SOFT IRON A" CALIBRATION

1. Verify that inner rotating disk and the compass points to North after it is positioned on the four pedestals.
2. Type softiron a<CR> Upon the above command, the computer will ask you to select the number of correction intervals (10 to 72)
3. Reply with number of sections that you want the circle to be divided into and press<CR> Example: 20 points will divide the circle into 18 degree intervals.
4. After <CR> the compass will instruct you to orient the compass board to point to Zero (or any other direction that is required to be ZERO). Rotate the large bottom page together with the compass until the desired direction overlaps with the North arrow on the fixture. Secure the fixture with masking tape at four corners. Pressing <CR> will store the raw compass value and automatically instruct the user to advance to the next angular orientation. This sequence will continue until the full revolution is completed. Upon completion of the full rotation the "soft iron a" calibration will automatically end and the correction formula will be stored. Use the numbers on the outside rim of the circle to position the compass at all required orientations. If you selected intervals sizes of (5, 6, 8, 9, 10, 12, 15, 18) degrees, you can use the appropriate windows for more accurate orientation.
5. Now rotate the compass to any angle within this circle and see the reply to the c?<CR> command.

GENERAL. During this test and calibration the top small circle should rotate within the large circle centered in the center. The bottom sheet should be stationary.

When using "softiron b" command - position sensor to a new heading and enter the heading value.

Repeat until done within the limit of available room for storage.

If you want to stop and save - hit ENTER without entering any numbers.

Hit ESC if you want to abort calibration and discard all the data.

General start-up instructions via Hyperterminal.

1. Every windows based PC has a Hyperterminal program, which could be found in the Accessory section.
2. Select the hyperterminal and open it for “direct com1” communication. If your computer has free com2, then open the hyperterminal in com2.
3. Make sure that the terminal settings are: 19200 baud, 8 bit, no parity, 1 stop, no flow control.
4. After the terminal is opened, the computer is ready to communicate with the module.
5. Plug the DB9 connector into the appropriate port in the PC, and then plug the blue connector to the main connector port on the module.
6. After both connectors are secured, turn the POWER ON.
7. Immediately after the power is applied, the unit will send a start header to the PC. The user will see the header displayed on the screen.
8. At this stage the module is ready to accept direct commands from the user.

Troubleshooting:

1. No Header is displayed.

Check the cable. Make sure that Rx and Tx are wired properly. Make sure there is common ground between the PC, Power Supply and the module. If necessary, swap Rx and Tx.

2. Strange characters are displayed.

This response is typical when there is a mismatch in baud rate. Change to new baud rate, and restart Hyperterminal with the new setting.